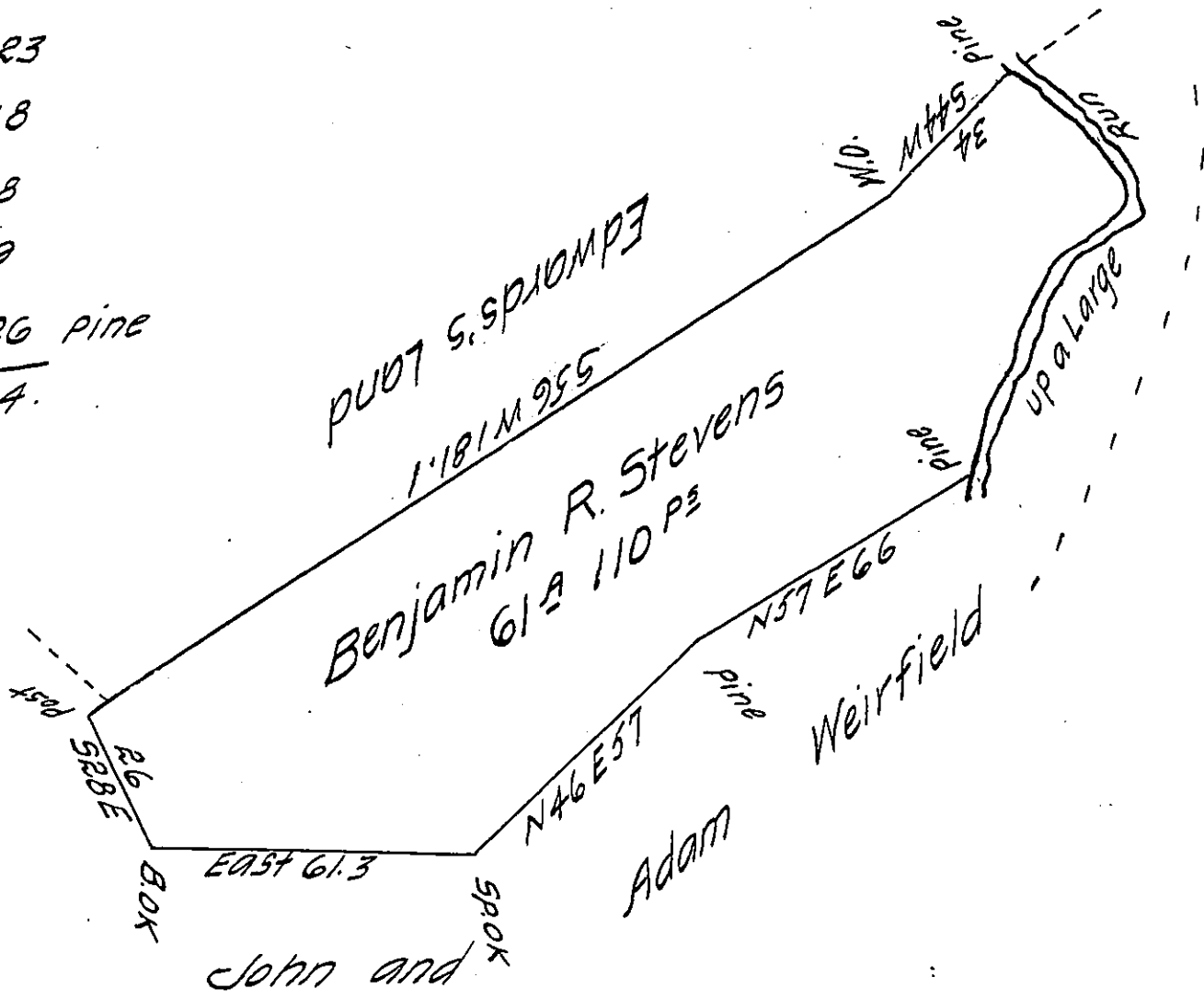


FORM No. 1.

The Courses and distances up the run from the pine to the pine are

N 19 E 23
 N 16 E 18
 N 55 E 18
 N 15 W 9
 N 54 W 26 Pine

 94.

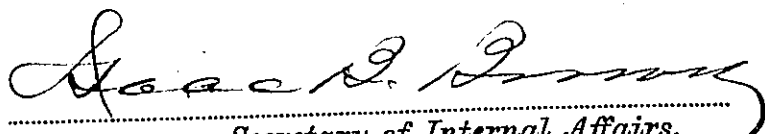


Situate in Barree Township Huntingdon County
 Containing sixty one Acres 110 perches and allowance.
 Including an Improvement Surveyed the 21st day of
 Nov^r 1821 in Pursuance of a Warrant Granted to Ben-
 jamin R. Stevens dated the 5th Nov^r 1821.

Pr W^m Reed D.S.

To Samuel Cochran Esq^r }
 Surveyor General }

IN TESTIMONY that the above is a copy of the original remaining on file in
 the Department of Internal Affairs of Pennsylvania, made
 conformably to an Act of Assembly approved the 16th day of
 February 1833, I have hereunto set my hand and caused
 the Seal of said Department to be affixed at Harrisburg,
 this eighteenth day of January 1907.


 Secretary of Internal Affairs.